

# outdoor living walls cold climate tough





# green living architecture

Green Living Architecture is the integration of plants and water with built form.

A vertical garden or living wall is a garden that is turned sideways. It is not found anywhere in nature, but with the right tools it can be done with tremendous success.



FACADE LIFE  
SPAN EXTENSION



HEALING  
ENVIRONMENT







# urban landscaping

The Flexipanel wall is an innovative solution for many urban problems, such as urban heating, climate change, noise and air pollution. Living walls are an enhancement to urban spaces and improve natural surroundings for both humans and animals.



URBANSTRONG



AIR  
PURIFICATION



AMBIENT  
TEMPERATURE  
REDUCTION



BIODIVERSITY  
INCREASE



# plant happiness

## unique plant care system



EFFICIENT  
WATER & PLANT  
NUTRITION SUPPLY



SUITABLE  
FOR EXTREME  
CONDITIONS



ROOT  
PROTECTION



WATER REUSE



24/7 REMOTE  
CONTROL  
MONITORING



PRUNING

The Plant Care System of a SemperGreenwall is unique. It is an elaborate system, that ensures each plant's roots to roam freely, micro irrigates the plants to save water and fertilizer and protects the roots from frost and heat. Herewith creating a continuous, monolithic vertical garden with lush, happy plants.

Thanks to the Plant Care System, plant loss is reduced to a minimum and replacement is unnecessary. Maintenance of a SemperGreenwall therefore only consists of pruning.

## why a SemperGreenwall?



UNIQUE PLANT CARE SYSTEM



EXPERT GUIDANCE ON PLANT SELECTION



UV RESISTANT FLEECE



PRE-GROWN



NO ROOT BOUNDING



FINISHING IN EVERY COLOR

EXCELLENT WIND STABILITY



CLEAN AND QUICK INSTALLATION



FLEXIBLE FORMS



FIRE RETARDANT



Class B-s2, d0

LIGHT WEIGHT



45 kg/m<sup>2</sup>

PREFERRED  
SEMPERGREENWALL INSTALLERS





# plant design

At Sempergreen quality is vitally important. Every situation is unique and climatic circumstances differ, which is why Sempergreen has thoroughly tested its assortment of plants.

The plant design possibilities are endless. As an architect, you are offered the opportunity to supply your own design and plant preferences. A SemperGreenwall is always planted with a carefully selected mix of plants, fit to the specific situation and outdoor or indoor climate of your project.



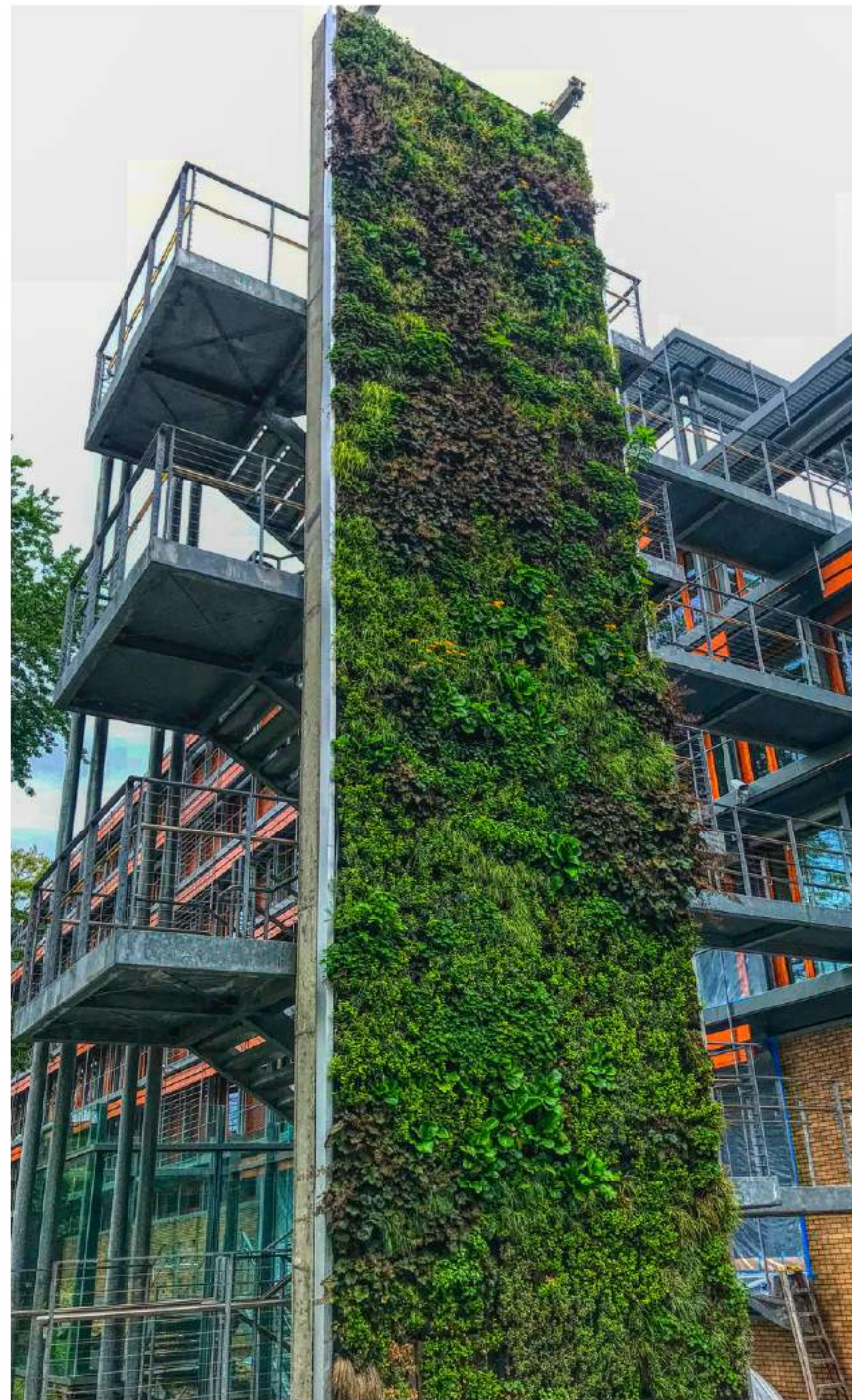
EXPERT PLANT SELECTION



TAILORED TO CUSTOMER WISHES



PLANT CARE SYSTEM



Plant patterns and logos are among the many options for a SemperGreenwall. Inform us of your wishes and together we will look for the best solution for your project.



# pre-grown plants

Thanks to its extensive knowledge of plants, Sempergreen selects only the strongest perennial plant varieties for its SemperGreenwall. Combined with many years of cultivation experience since 1998, Sempergreen offers a perfectly grown facade which always has at least 90% coverage on delivery.



## construction & design

### DRIPLINES

water & nutrition

### CONSTRUCTION FRAME

Unique hanging system with Omega profiles and waterproof layer

### FLEXIPANEL

Modular, lightweight (45 kg/m<sup>2</sup>) and most flexible system for corners and curved surfaces. With TPO back side, so no water pollution.

### PLANT DESIGN

Customized planting plan with 90% coverage on delivery. Instant green result.

### PLANT CARE SYSTEM

Efficient and focused watering and nutrition with an intelligent irrigation computer and drip lines every 50cm. 24/7 remote control monitoring.

### EDGING DETAILS & GUTTER

Perfect connection to existing wall. Standard durable aluminum. Available in every possible color.

### PLANT CARE SYSTEM



PRE-GROWN



PREFERRED  
SEMPERGREENWALL  
INSTALLERS

